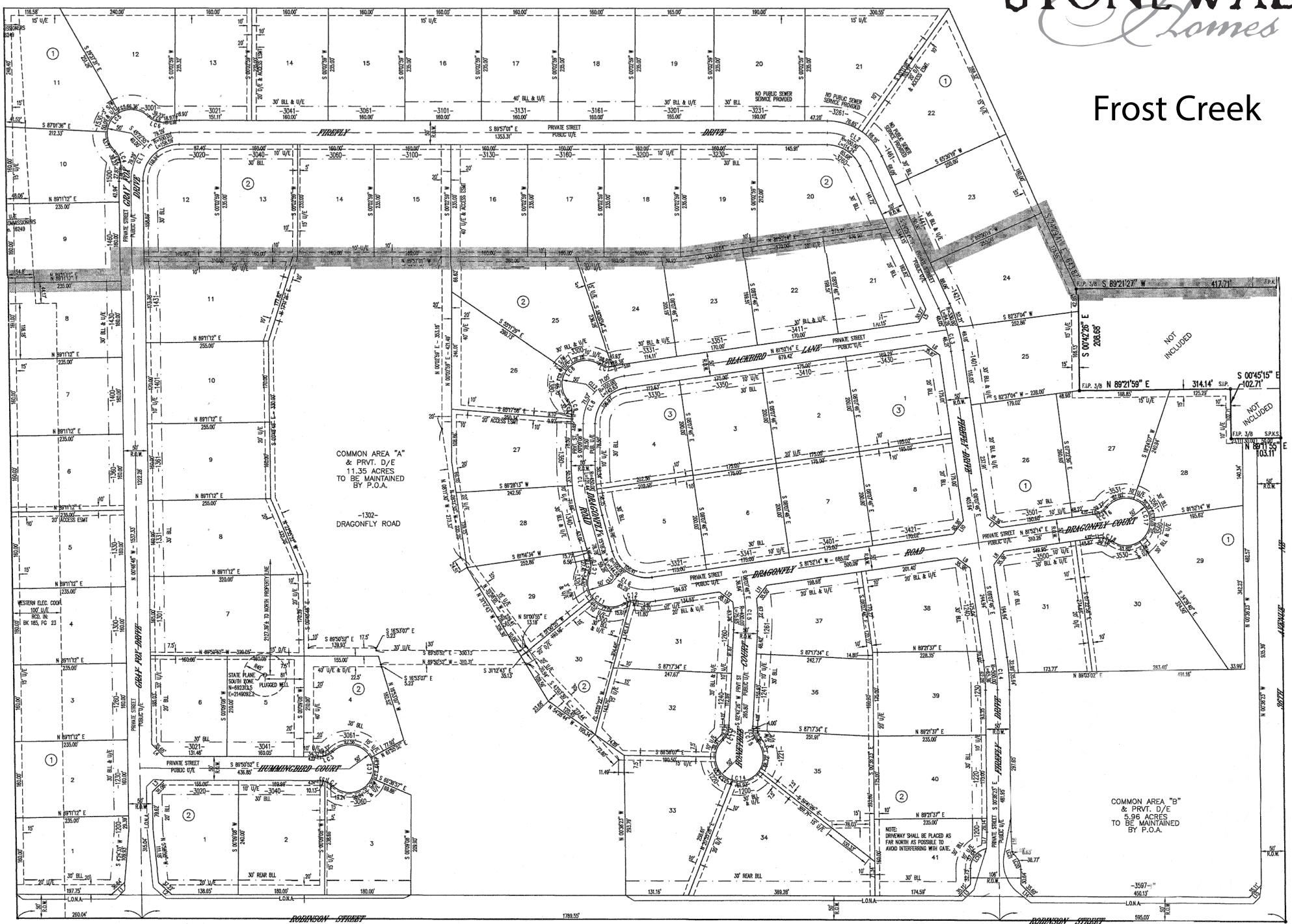


STONEWALL Homes

Frost Creek



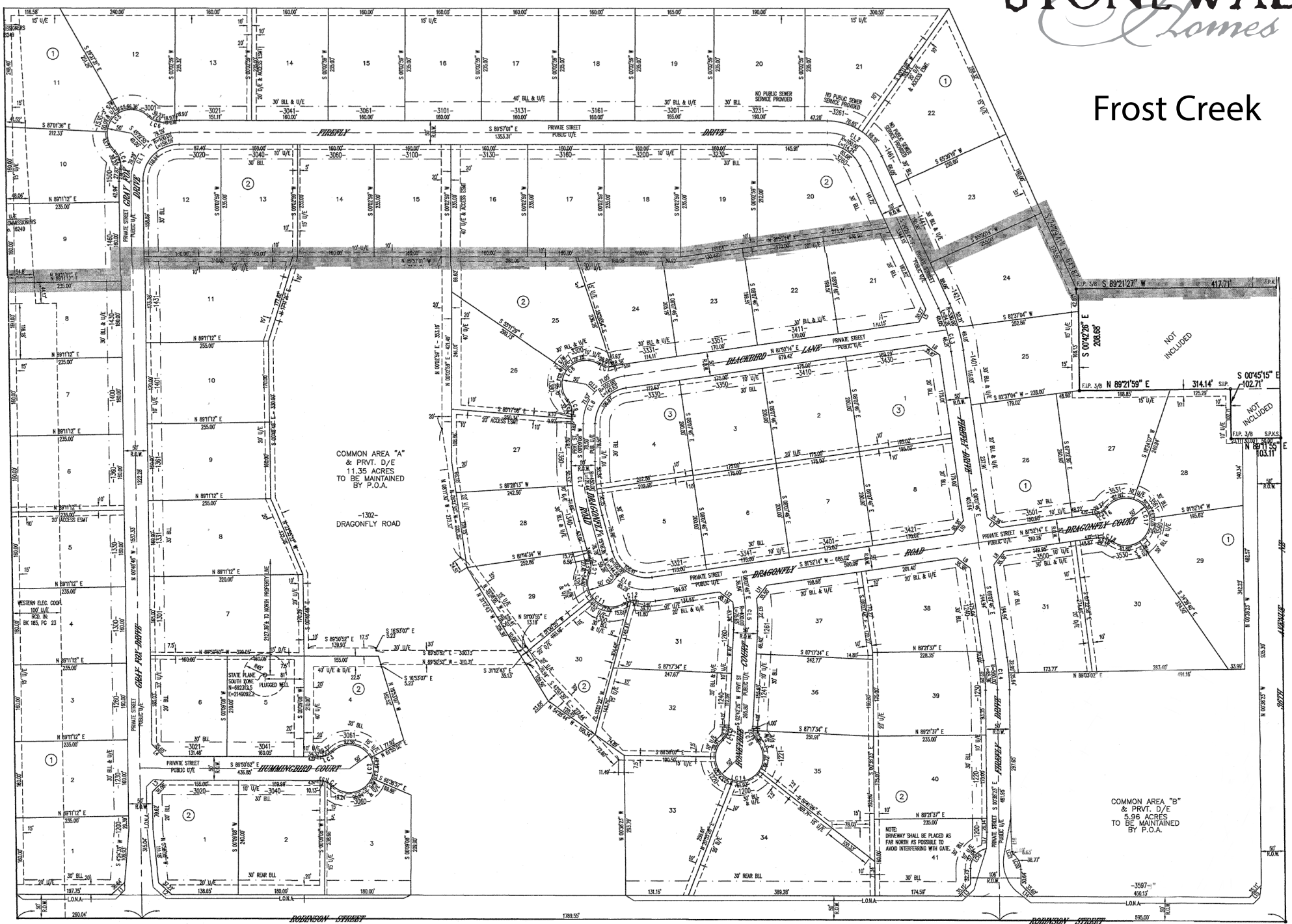
COMMON AREA "A"
& PRVT. D/E
11.35 ACRES
TO BE MAINTAINED
BY P.O.A.
-1302-
DRAGONFLY ROAD

COMMON AREA "B"
& PRVT. D/E
5.96 ACRES
TO BE MAINTAINED
BY P.O.A.

NOTE:
DRAINAGE SHALL BE PLACED AS
FAR NORTH AS POSSIBLE TO
AVOID INTERFERING WITH GATE.

NOT
INCLUDED

NOT
INCLUDED



COMMON AREA "A"
& PRVT. D/E
11.35 ACRES
TO BE MAINTAINED
BY P.O.A.
-1302-
DRAGONFLY ROAD

COMMON AREA "B"
& PRVT. D/E
5.96 ACRES
TO BE MAINTAINED
BY P.O.A.

NOTE:
DRAINAGE SHALL BE PLACED AS
FAR NORTH AS POSSIBLE TO
AVOID INTERFERING WITH GATE.

NOT
INCLUDED

NOT
INCLUDED

Frost Creek

ADDRESS	BLOCK	LOT	SIZE	PRICE	BUILDER
1200 Gray Fox Drive	1	1	0.88	\$92,900	Open
1230 Gray Fox Drive	1	2	0.92	\$92,900	Open
1260 Gray Fox Drive	1	3	0.92	\$92,900	Open
1300 Gray Fox Drive	1	4	0.91	\$92,900	Open
1330 Gray Fox Drive	1	5	0.91	\$92,900	Open
1360 Gray Fox Drive	1	6	0.90	\$92,900	Open
1400 Gray Fox Drive	1	7	0.90	\$92,900	Open
1460 Gray Fox Drive	1	9	0.90	\$92,900	Open
1500 Gray Fox Drive	1	10	0.81	\$92,900	Open
3020 Hummingbird Court	2	1	0.95	\$105,000	Open
3040 Hummingbird Court	2	2	0.99	\$105,000	Open
3041 Hummingbird Court	2	5	0.77	\$105,000	Open
3021 Hummingbird Court	2	6	0.76	\$105,000	Open
3020 Firefly Drive	2	12	0.86	\$105,000	Open
3260 Firefly Drive	2	20	0.93	\$105,000	Open
3431 Blackbird Lane	2	21	0.84	\$105,000	Open
3351 Blackbird Lane	2	23	0.85	\$105,000	Open
3331 Blackbird Lane	2	24	0.86	\$105,000	Open
1260 Honeybee Court	2	31	0.81	\$105,000	Open
1200 Honeybee Court	2	34	1.48	\$105,000	Open
1230 Firefly Drive	2	39	0.94	\$105,000	Open
1220 Firefly Drive	2	40	0.93	\$105,000	Open
1200 Firefly Drive	2	41	0.81	\$105,000	Open

School Districts:

Eisenhower / Irving / Norman HS North