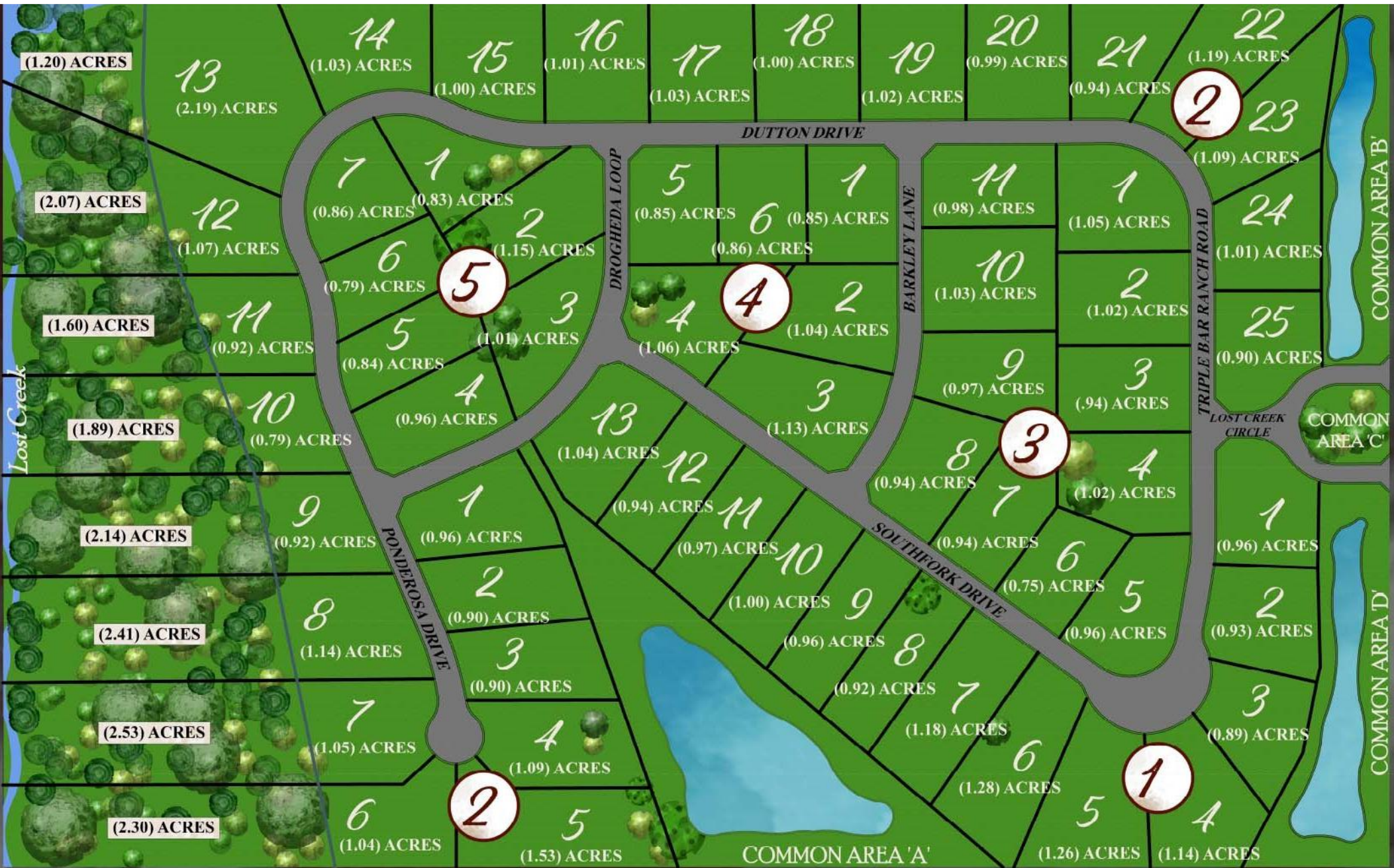


STONEWALL

The Ranch at Lost Creek



The Ranch at Lost Creek

BLOCK	LOT	PRICE	BUILDER
3	1	\$150,000	Spec
1	1	\$165,000	Open
1	2	\$165,000	Open
1	3	\$165,000	Open
1	4	\$165,000	Open
1	5	\$165,000	Open
1	6	\$165,000	Open
1	7	\$175,000	Open
1	8	\$175,000	Open
1	9	\$175,000	Open
1	10	\$175,000	Open
1	11	\$175,000	Open
1	12	\$175,000	Open
1	13	\$175,000	Open
2	1	\$175,000	Open
2	2	\$175,000	Open
2	3	\$175,000	Open
2	4	\$175,000	Open
2	5	\$165,000	Hold

BLOCK	LOT	PRICE	BUILDER
2	6	\$350,000	Open
2	7	\$350,000	Open
2	8	\$375,000	Open
2	9	\$350,000	Open
2	10	\$350,000	Open
2	11	\$375,000	Open
2	12	\$450,000	Open
2	13	\$450,000	Open
2	16	\$150,000	Open
2	18	\$150,000	Open
2	19	\$150,000	Open
2	20	\$150,000	Open
2	23	\$165,000	Open
2	24	\$165,000	Open
2	25	\$165,000	Open
3	2	\$150,000	Open
3	3	\$150,000	Open
3	5	\$150,000	Open
3	6	\$150,000	Open

BLOCK	LOT	PRICE	BUILDER
3	7	\$150,000	Open
3	8	\$150,000	Open
3	9	\$150,000	Open
3	10	\$150,000	Open
3	11	\$150,000	Open
4	1	\$150,000	Open
4	2	\$150,000	Open
4	3	\$150,000	Open
4	4	\$150,000	Open
4	5	\$150,000	Open
4	6	\$150,000	Open
5	1	\$150,000	Open
5	2	\$150,000	Open
5	3	\$150,000	Open
5	4	\$150,000	Open
5	5	\$150,000	Open
5	6	\$150,000	Open
5	7	\$150,000	Open